



Mouse anti Keratin 19 Monoclonal Antibody

Alternative Name(s): CK-19; cytokeratin 19; KRT19

Order Information

- **Description:** Cytokeratin 19
- **Catalogue:** 606-530
- **Lot:** See label
- **Size:** 100ug/200ul
- **Host:** Mouse
- **Clone:** ZY418
- **Application:** IHC(P), WB
- **Reactivity:** Hu

ANTIGEN PREPARATION

A synthetic peptide corresponding to the C-terminus of CK19

BACKGROUND

Keratins are expressed predominantly in epithelial cells and as members of the intermediate filament family of proteins, they are part of the largest family of cytoskeletal proteins. Cytokeratin 19 is a member of the keratin family, a type I keratin. It is the smallest keratin protein and shows a diverse expression pattern ranging from developing embryo, mature striated muscle, complex and simple epithelia, to epithelial stem cells. It is expressed in mammary gland ductal and secretory cells, gastrointestinal tract, hair follicles, muscle fibers, etc. Keratins are widely used as diagnostic markers to detect tumors in both primary and distal sites and to determine tumors' tissue of origin in order to aid in treatment strategies. K19 has been particularly useful because it is among the most sensitive diagnostic markers across a broad range of cancer types. Expression of cytokeratin 19 has been demonstrated in various malignancies, including esophageal cancer, breast cancer, and pancreatic cancer.

PURIFICATION

The mouse IgG is purified by Protein A-Affinity Chromatography according to Isotyping

FORMULATION

This affinity purified antibody is supplied in sterile Phosphatebuffered saline (pH7.2) containing antibody stabilizer

SPECIFICITY

This antibody recognizes human Cytokeratin 19 protein. The other species are not tested.

STORAGE

The antibodies are stable for 24 months from date of receipt when stored at -20°C to -70°C . The antibodies can be stored at 2°C - 8°C for three month without detectable loss of activity. Avoid repeated freezing-thawing cycles.

APPLICATIONS/SUGGESTED WORKING DILUTIONS*

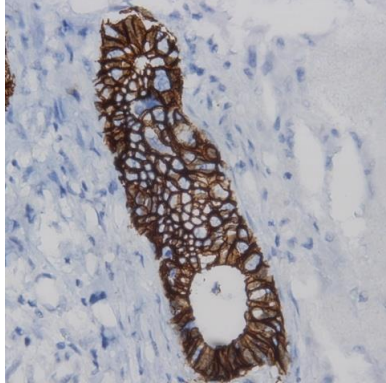
- Western Blot: 0.1-1 $\mu\text{g/ml}$
- ELISA: 0.01-0.1 $\mu\text{g/ml}$
- Immunoprecipitation: 2-5 $\mu\text{g/ml}$
- IHC: 2-10 $\mu\text{g/ml}$
- Flow cytometry: Not tested
- Molecular Weight: 43.0
- Positive Control: Kidney Tissue
- Cellular Location: Cell Membrane

*Optimal dilutions should be determined by researchers for the specific applications.

FOR RESEARCH USE ONLY.

AbboMax, Inc 2528 Qume Drive, Suite 8, San Jose, California 95131, USA
1 408-573-1898 (Tel). 1 408-573-1858 (Fax). www.abbomax.com info@abbomax.com

DATA ATTACHMENTS



Immunohistochemistry: Human breast carcinoma (FFPE) stained with Mouse anti- Cytokeratin-19 (Clone ZY418) (Cat#606-530) at 1:200 for 10 min @ RT. Staining of formalin-fixed tissue requires boiling tissue sections in 10 mM Citrate Buffer, pH 6.0 for 10 min followed by cooling at RT for 20 min.

REFERENCES

FOR RESEARCH USE ONLY.